

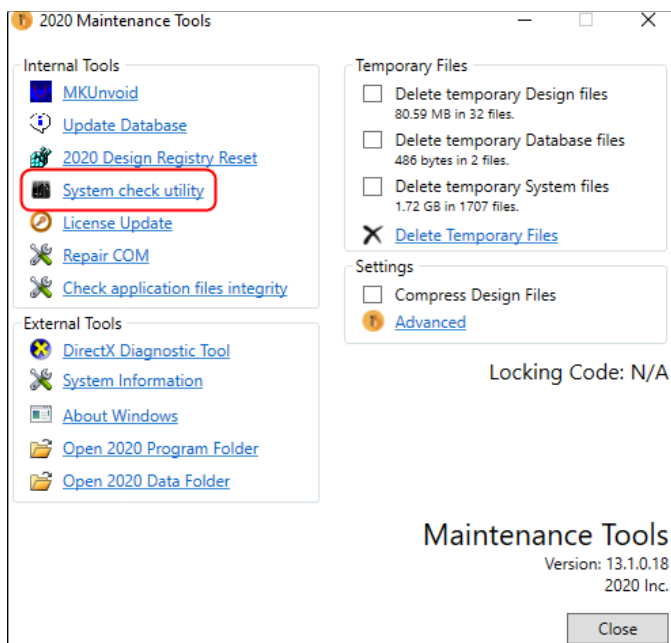


## Hardware requirements for Design and Design Live v. 13 and above

Hardware	Recommended
Actively supported operating systems	PC operating systems (64bit): Windows 10, Windows 11
Processor	Inrel i7 (8 core) or AMD Ryzen 7
System memory	16 GB RAM
Hard drive	SSD with 20 GB free disk space for installation
Video card	Dedicated video card (such as NVIDIA RTX3050). Please avoid built-in video cards (chipset).

### Please Note:

- Ensure you have the latest video driver, going to **Maintenance tools**, clicking **System check utility** and follow the steps on the screen.



- High speed internet connection required for updates and 2020 Cloud usage.
- Running Design Live Version in a virtual environment such as VMware or Parallels will impact rendering performance.
- Virtual environments are not supported for Design.